



The elegant way of expressing your own style.



THE  
DECENTA  
RANGE



# ENTRANCE DOORS WITH DOUBLE-SIDED ATTACHMENT PANELS

In homes just as in personal relationships, nothing beats an excellent first impression. A high-quality door sets a welcoming ambience and raises the perceived value of your entire home as well as providing added security.

Outstanding advanced design is no longer contradictory to strict safety requirements. The double-sided attachment panel fulfils both demands superbly.

The exterior as well as the interior views of the door leaf display entirely flush surfaces. An approach to style and elegance that certainly lives up to aesthetes' high expectations.

"THE CLEAN AESTHETIC LINES COMBINED WITH THE FLUSH SURFACES OF THE DOUBLE-SIDED ATTACHMENT PANEL IS THE RESULT OF CONSISTENT DESIGN."  
Nina Wolf, Designer

The highly insulating core is made of rigid PU foam and cellulose. The glass pane insert is triple glazed. The design components used ensure optimum thermal insulation and with this promote energy savings. 3mm aluminium sheeting on the exterior surface and 2mm on the interior surface provide superior resistance to forced entries and give you a secure feeling in your own home.

adeco aluminium attachment panels – a finely tuned combination of aesthetic charm, outstanding design with selected high-grade materials, state-of-the-art technology and precise craftsmanship.

## INDEX

Alliso .....	10 – 11	Metris no glass insert .....	6 – 7
Allon .....	28 – 29	Numira .....	16 – 17
Amsterdam .....	48 – 49	Paris .....	54 – 55
Arola .....	20 – 21	Penda .....	18 – 19
Bruxelles .....	50 – 53	Talio .....	32 – 35
Caverro .....	12 – 13	Timano .....	24 – 25
Consis. ....	22 – 23	Vilmo .....	36 – 37
Linora .....	26 – 27	The attachment panel. . .	58 – 59
Liseo W2i .....	40 – 41	The surfaces	
Liseo W3i .....	42 – 43	FINEA .....	60 – 61
Liseo W4i .....	44 – 45	SILVEA .....	62 – 63
London .....	56 – 57		
Metris .....	8 – 9		



# THE DECENTA RANGE







**Metris LH version | Glazed**

DESIGN: Sabine Bischof

**Metris LH version | No glass insert**

DESIGN: Sabine Bischof



**Alliso LH version | 4 glazed inserts**

DESIGN: Sabine Bischof

**Caverro LH version | 3 glazed inserts**

DESIGN: Sabine Bischof



**Metris** RH version | No glass insert

Colour Finea 04

With stainless steel inlays on the exterior surface

●● Part no. F83 B

●○ Part no. F83 A

Supplied with design related handle HA 591

Matt brushed stainless steel

With glazed side panel

**Metris** | Model pane

Sand blasted Metris 1

On clear basic glass

Glazing matt finish – borders clear glass

Part no. GS 017



**Metris** LH version | No glass insert

Colour Silvea 04

With stainless steel inlays on the exterior surface

●● Part no. F82 B

●○ Part no. F82 A

Supplied with design related handle HA 591

Matt brushed stainless steel

With glazed side panel

**Metris** | Model pane

Sand blasted Metris 3

On clear basic glass

Glazing matt finish – lines 5 mm clear glass

Part no. GS 025

# Metris



AMBIENCE\*  
**Metris** RH version | Glazed  
Clear glass, flat  
Shown as  
Double-sided attachment panel





**Metris** RH version | Glazed  
With stainless steel inlays on the exterior surface  
Clear glass, flat  
●● Part no. F91 B  
●○ Part no. F91 A  
Supplied with design related handle HA 591  
Matt brushed stainless steel

Alliso



AMBIENCE\*  
**Alliso** LH version | 4 glazed inserts  
Clear glass, flat  
Shown as  
Double-sided attachment panel



**Alliso** LH version | 4 glazed inserts

Colour Finea 04

With stainless steel inlays on the exterior surface

Clear glass, flat

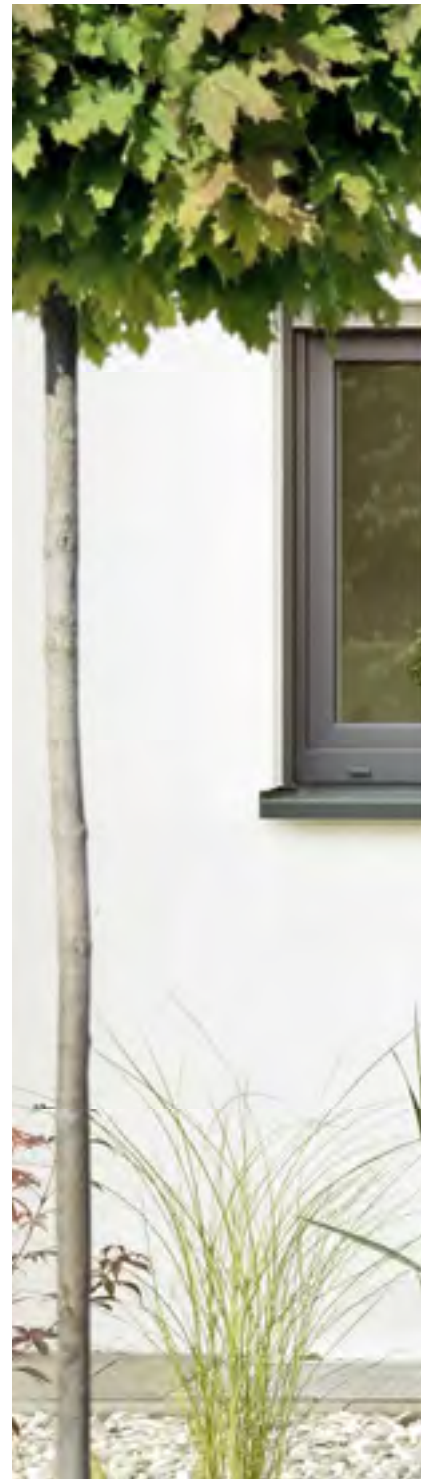
●● Part no. F99 B

●○ Part no. F99 A

Supplied with design related handle HA 591

Matt brushed stainless steel

# Caverro



AMBIENCE\*  
**Caverro** LH version | 3 glazed inserts  
Clear glass, flat  
Shown as  
Double-sided attachment panel



**Caverro** LH version | 3 glazed inserts

Colour *Silvea 03*

With stainless steel inlays on the exterior surface

Clear glass, flat

●● Part no. F86 B

●○ Part no. F86 A

Supplied with design related handle HA 591

Matt brushed stainless steel

# CENTEA



**Numira** LH version | Glazed  
DESIGN: rahe + rahe



**Penda** | Glazed  
DESIGN: rahe + rahe



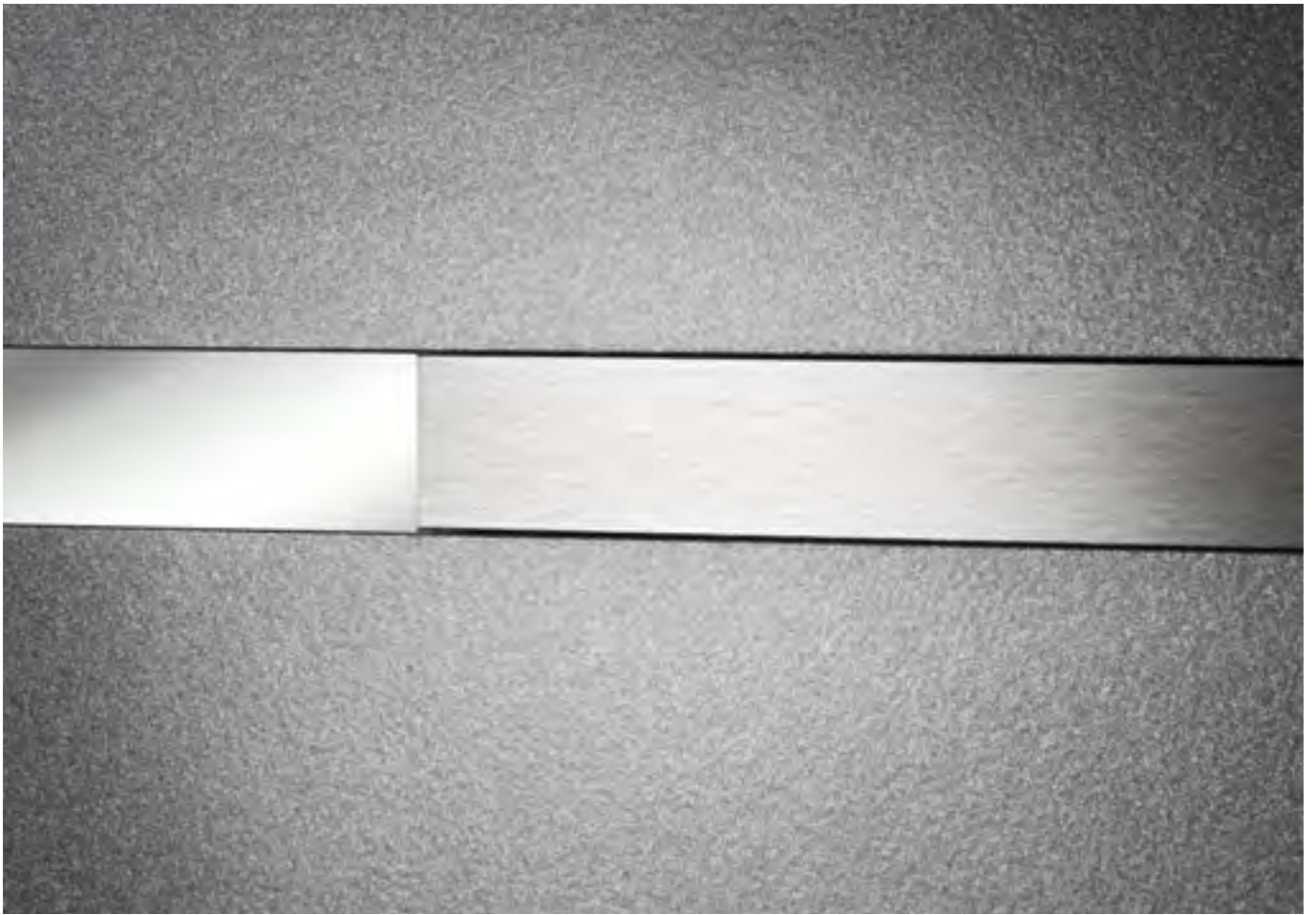
**Arola** | 3 glazed inserts  
DESIGN: Sabine Bischof



**Consis** | Glazed  
DESIGN: rahe + rahe



**Timano** | 3 glazed inserts  
DESIGN: Sabine Bischof



**Linora** | 5 glazed inserts

DESIGN: gestalttransfer



**Allon** | Glazed

DESIGN: rahe + rahe

# Numira



AMBIENCE\*

**Numira** LH version | Glazed

Sand blasted Numira 1

On clear basic glass

(figures + large zone clear glass –  
background matt finish)

Shown as

Double-sided attachment panel





**Numira** LH version | Glazed

Colour Finea 03

Silver anodised aluminium feature  
on the exterior surface

Sand blasted Numira 1

On clear basic glass

(figures + large zone clear glass -  
background matt finish)

●● Part no. M05 B

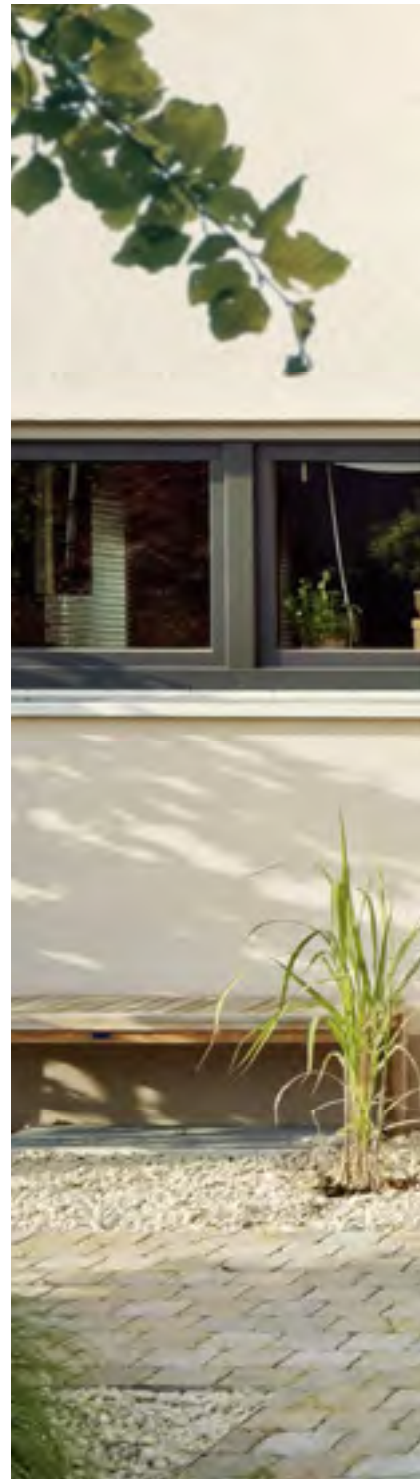
●○ Part no. M05 A

Supplied with design related handle HA 215

Matt brushed stainless steel

Combined with silver anodised aluminium

Penda



AMBIENCE\*

**Penda** | Glazed

Clear glass, flat

Identical views on the outside / inside

Non-standard version

Available as an option

Left and right glazed side panels

Clear glass, flat



**Penda** | Glazed  
Colour Silvea 04  
With stainless steel feature  
on the exterior surface  
Clear glass, flat  
●● Part no. K97 B  
●○ Part no. K97 A  
Supplied with design related handle HA 312  
Matt brushed stainless steel

Left and right glazed side panels  
Clear glass, flat

Arola



AMBIENCE\*  
**Arola** | 3 glazed inserts  
Clear glass, flat  
Shown as  
Double-sided attachment panel



**Arola** | 3 glazed inserts  
Colour Finea 04 / Finea 03  
Clear glass, flat  
●● Part no. U03 B  
●○ Part no. U03 A  
Supplied with design related handle HA 284  
Matt brushed stainless steel

Consis

18

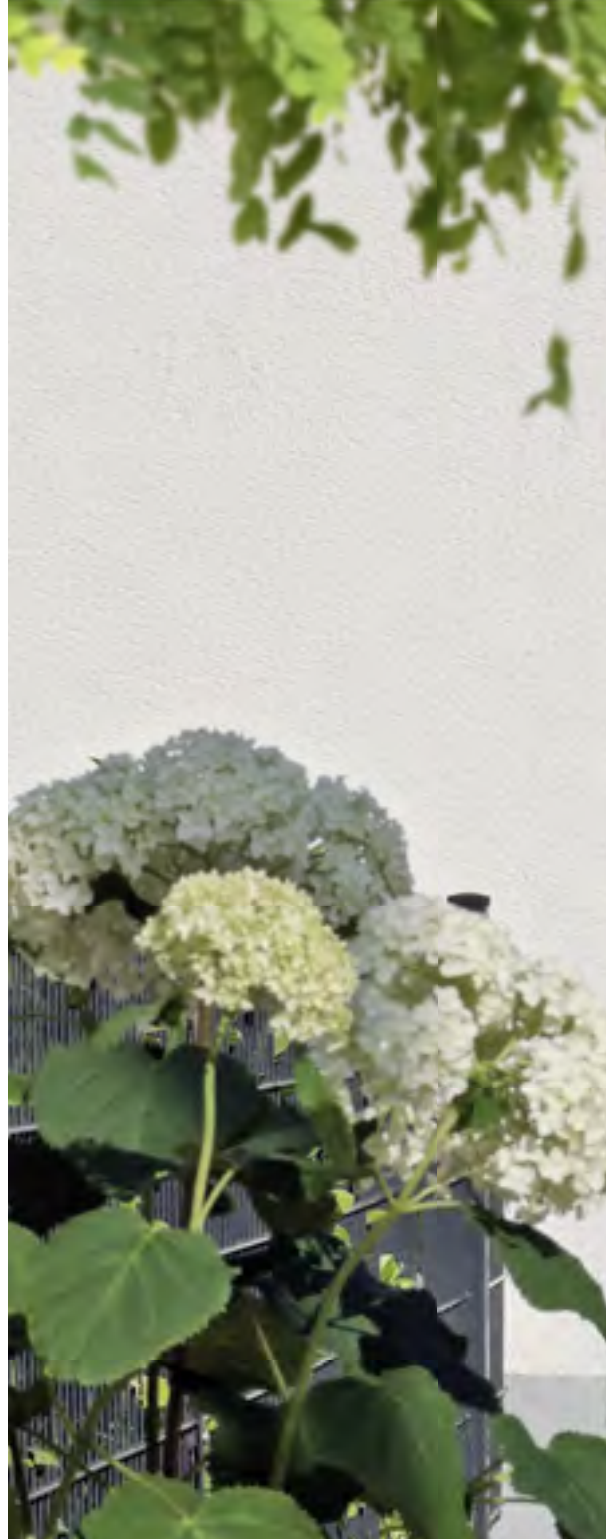
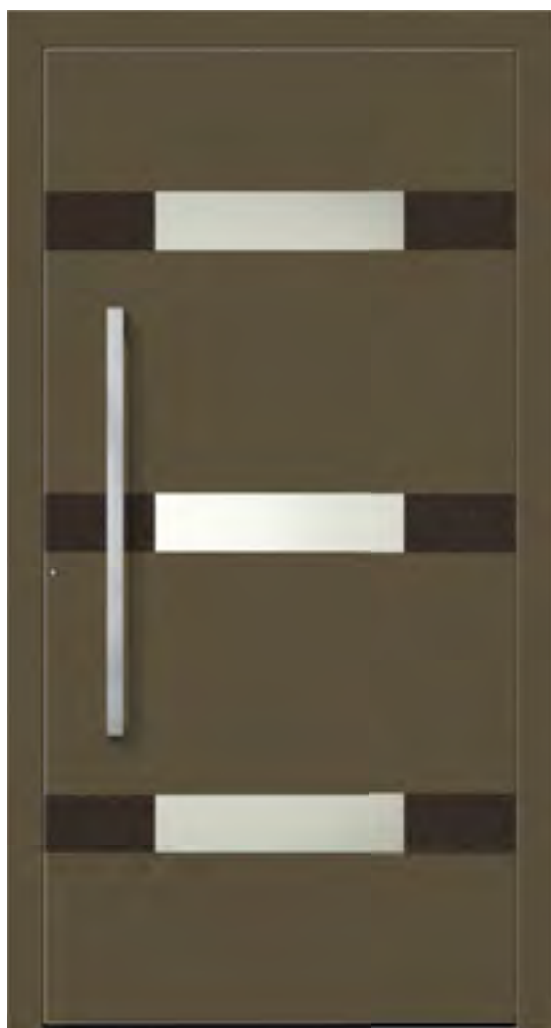


AMBIENCE\*  
**Consis** | Glazed  
Sand blasted Consis 1  
On clear basic glass, flat  
Shown as  
Double-sided attachment panel



**Consis** | Glazed  
Colour Silvea 11  
Sand blasted Consis 1  
On clear basic glass, flat  
●● Part no. K25 B  
●○ Part no. K25 A  
Supplied with design related handle HA 312  
Matt brushed stainless steel

# Timano



**Timano** | 3 glazed inserts

Colour Finea 14/Finea 15

Clear glass, flat

●● Part no. U12 B

●○ Part no. U12 A

Supplied with design related handle HA 286

Matt brushed stainless steel





**Timano** | 3 glazed inserts

Colour Finea 03 / Finea 15

Clear glass, flat

● Part no. U12 B

○ Part no. U12 A

Supplied with design related handle HA 286

Matt brushed stainless steel

# Linora



**Linora** | 5 glazed inserts  
Colour Silvea 04  
With stainless steel feature  
on the exterior surface  
Clear glass, flat  
●● Part no. K59 B  
●○ Part no. K59 A  
Supplied with design related handle HA 465  
Matt brushed stainless steel

DETAIL  
**Linora** | 5 glazed inserts  
Colour Silvea 04  
With stainless steel feature  
on the exterior surface  
Clear glass, flat





**Linora** | 5 glazed inserts  
Colour Silvea 10  
With stainless steel feature  
on the exterior surface  
Clear glass, flat  
●● Part no. K59 B  
●○ Part no. K59 A  
Supplied with design related handle HA 465  
Matt brushed stainless steel

# Allon



**Allon** | Glazed

Colour Silvera 04

Satinato white, flat

● Part no. 132 B

● Part no. 132 A

Supplied with design related handle HA 465

Matt brushed stainless steel



**Allon** | Glazed

Clear glass, flat

●● Part no. 132 B

●○ Part no. 132 A

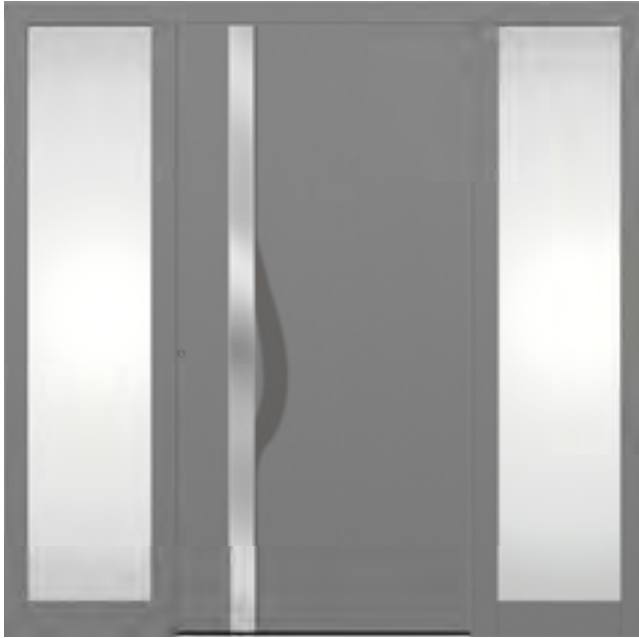
Supplied with design related handle HA 465

Matt brushed stainless steel

Left and right glazed side panels

Clear glass, flat





**Talio** LH version | No glass insert, with left and right glazed side panels

DESIGN: Sabine Bischof

**Talio** LH version | No glass insert

DESIGN: Sabine Bischof



**Vilmo** | No glass insert, with glazed side panel

DESIGN: Sabine Bischof

# Talio



**Talio** LH version | No glass insert

Colour Finea 04

●● Part no. U02 B

●○ Part no. U02 A

Supplied with design related handle HA 297

Silver anodised aluminium

With glazed side panel

Clear glass, flat





**Talio** RH version | No glass insert

Colour Finea 13

●● Part no. U11 B

●○ Part no. U11 A

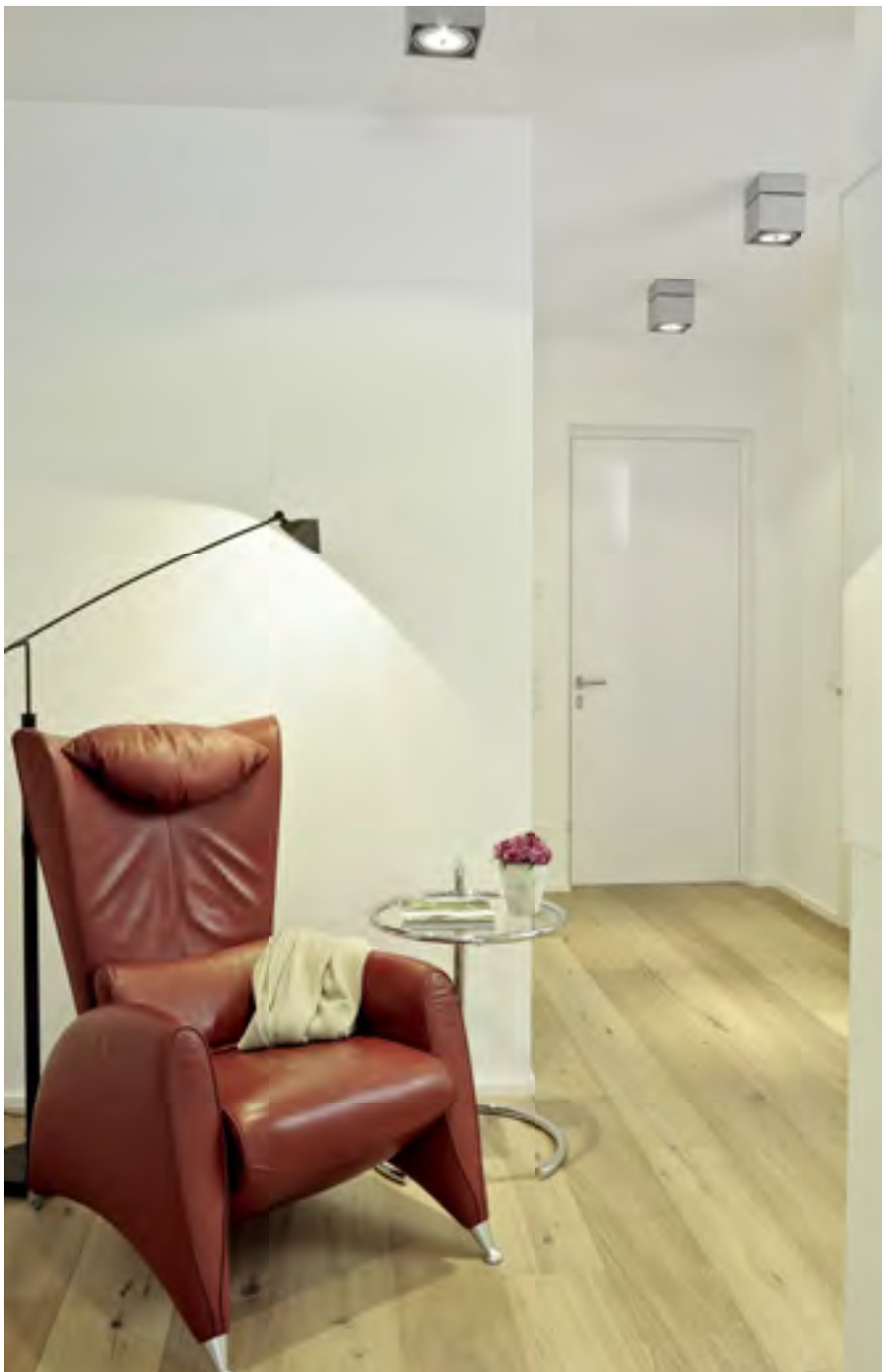
Supplied with design related handle HA 465

Silver anodised aluminium

With glazed side panel

Clear glass, flat

# Talio



AMBIENCE\*  
**Talio** RH version | No glass insert  
Shown as  
Double-sided attachment panel  
Non-standard height



**Talio** RH version | No glass insert

Colour Coral red

●● Part no. U11 B

●○ Part no. U11 A

Supplied with design related handle HA 465

Silver anodised aluminium

Non-standard height

Vilmo

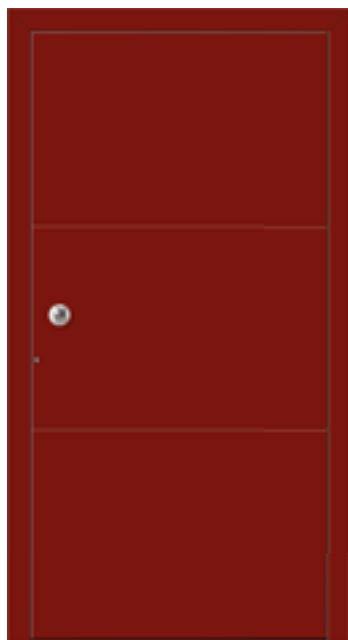


AMBIENCE\*  
**Vilmo** | No glass insert  
Shown as  
Double-sided attachment panel  
Non-standard height



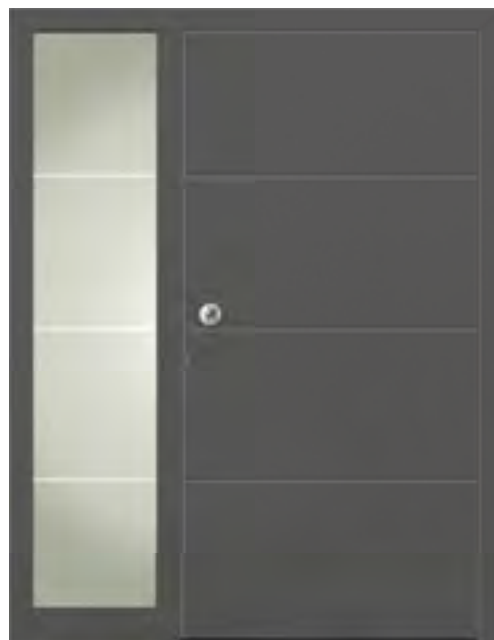
**Vilmo** | No glass insert  
●● Part no. U13 B  
●○ Part no. U13 A  
Supplied with design related  
handle HA 298  
Silver anodised aluminium  
Non-standard height





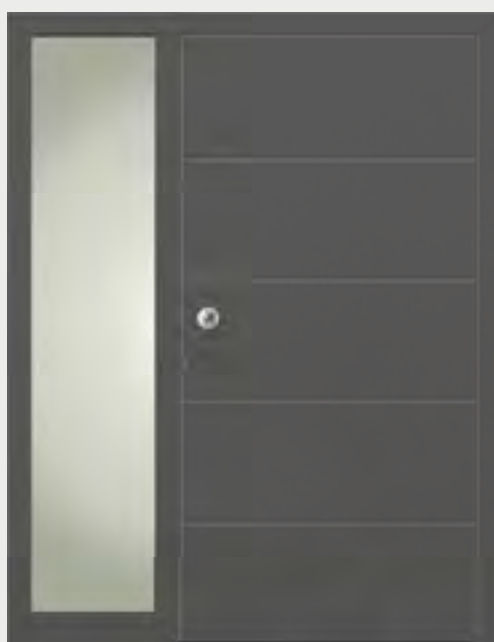
**Liseo W2i** | No glass insert

DESIGN: adeco



**Liseo W3i** | No glass insert, glazed side panel

DESIGN: adeco



**Liseo W4i** | No glass insert, glazed side panel

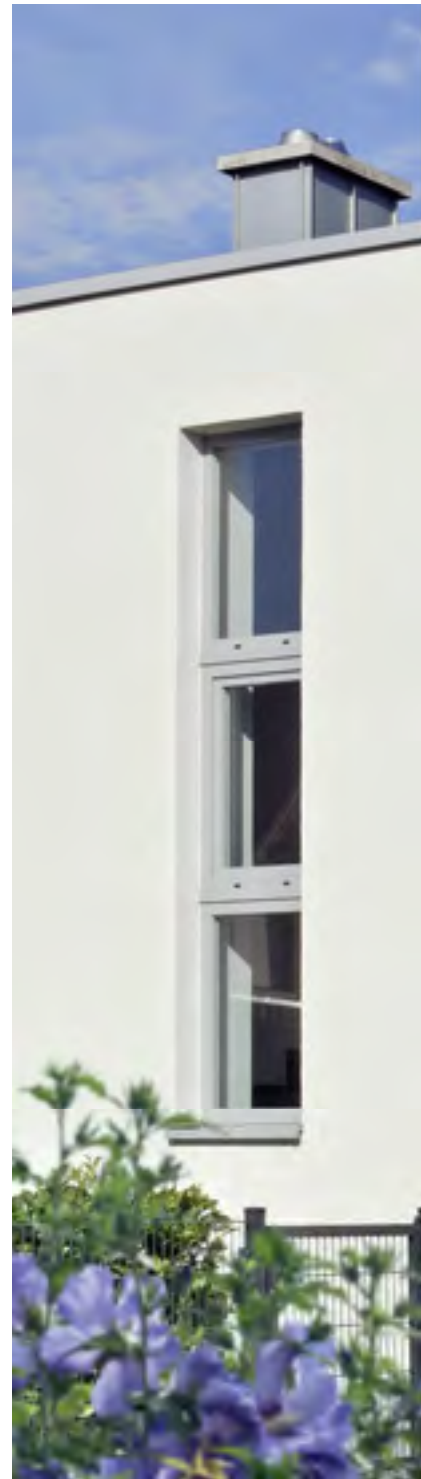
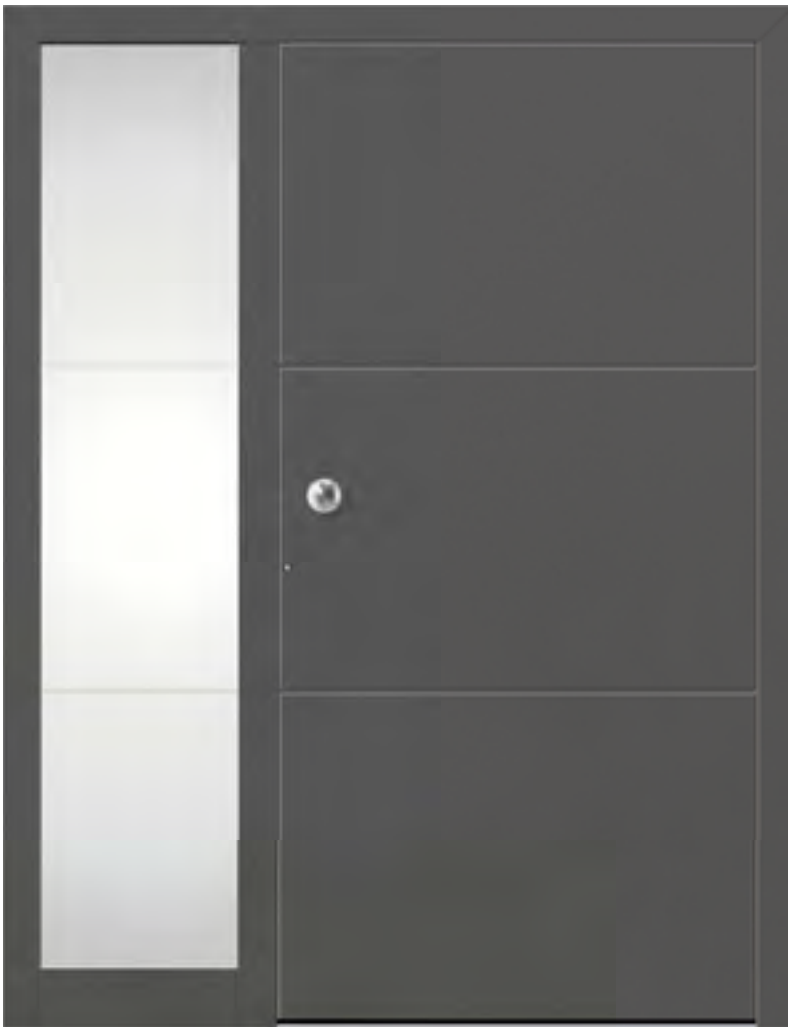
DESIGN: adeco



**Liseo W4i** | No glass insert

DESIGN: adeco

# Liseo W2i



**Liseo W2i** | No glass insert

Colour Silvea 04

● Part no. N01 B

○ Part no. N01 A

Supplied with design related door knob HA 445

Matt brushed stainless steel

With glazed side panel

**Liseo W2i** | Model pane

Sand blasted Liseo W2i variant 2

On clear basic glass

Glazing matt finish with 2 clear lines

Part no. GS 312





**Liseo W2i** | No glass insert

Colour Light grey

●● Part no. N01 B

●○ Part no. N01 A

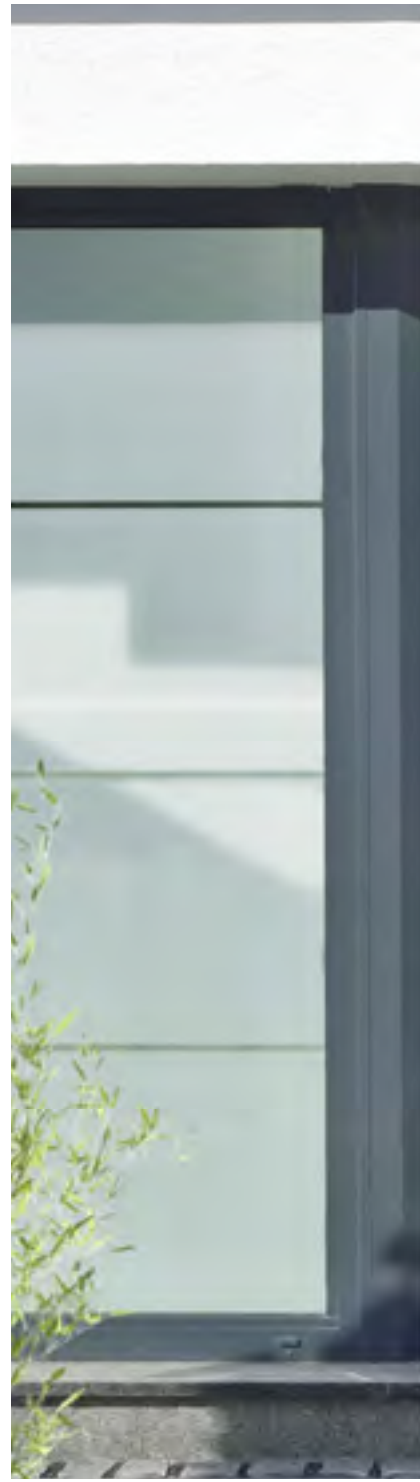
Supplied with design related door knob HA 445

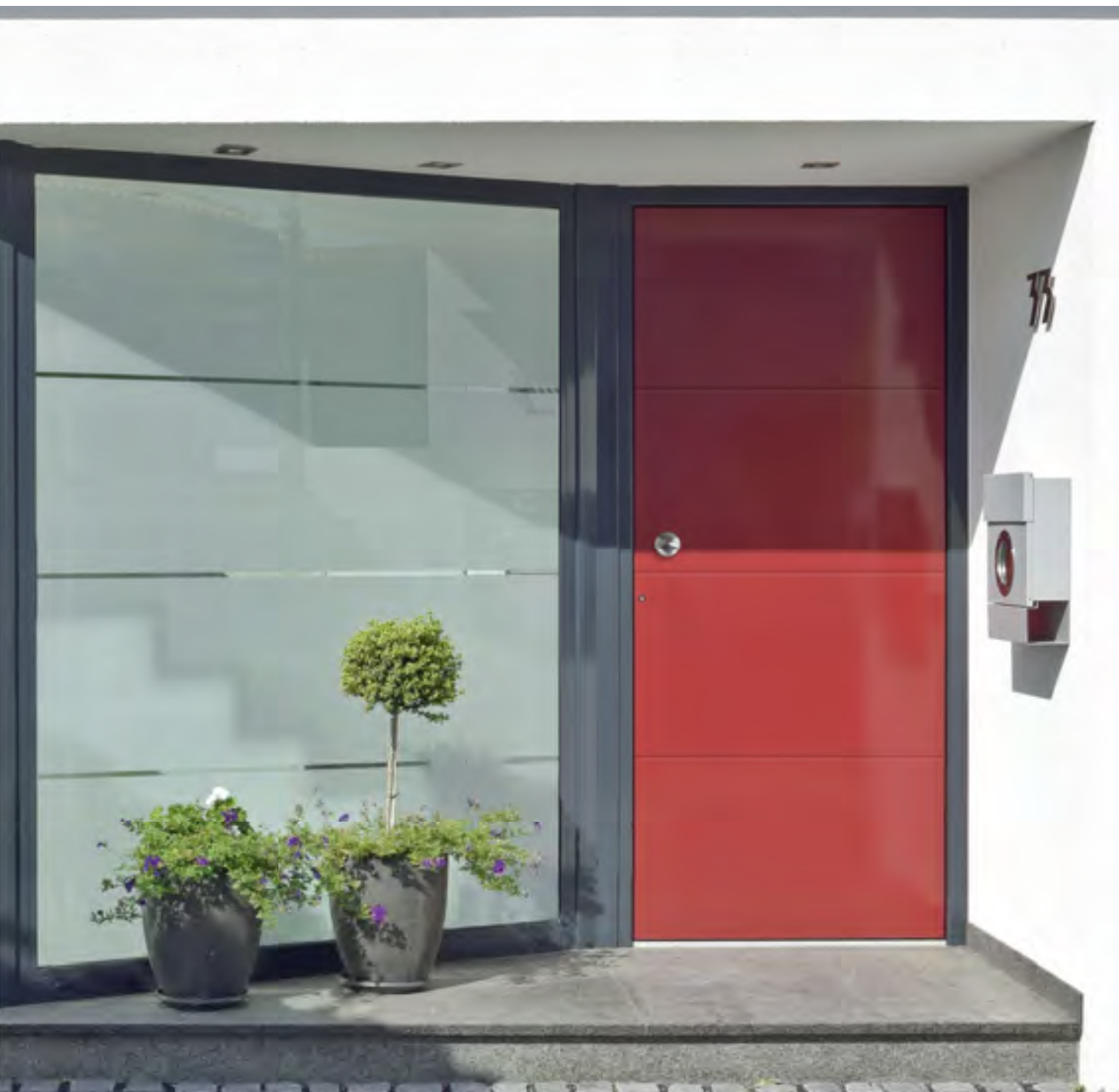
Matt brushed stainless steel

With glazed side panel

Clear glass, flat

Liseo W3i





**Liseo W3i** | No glass insert

Colour Carmine red

● Part no. N22 B

● Part no. N22 A

Supplied with design related door knob HA 445

Matt brushed stainless steel

With 2 glazed side panels

**Liseo W3i** | Model panes

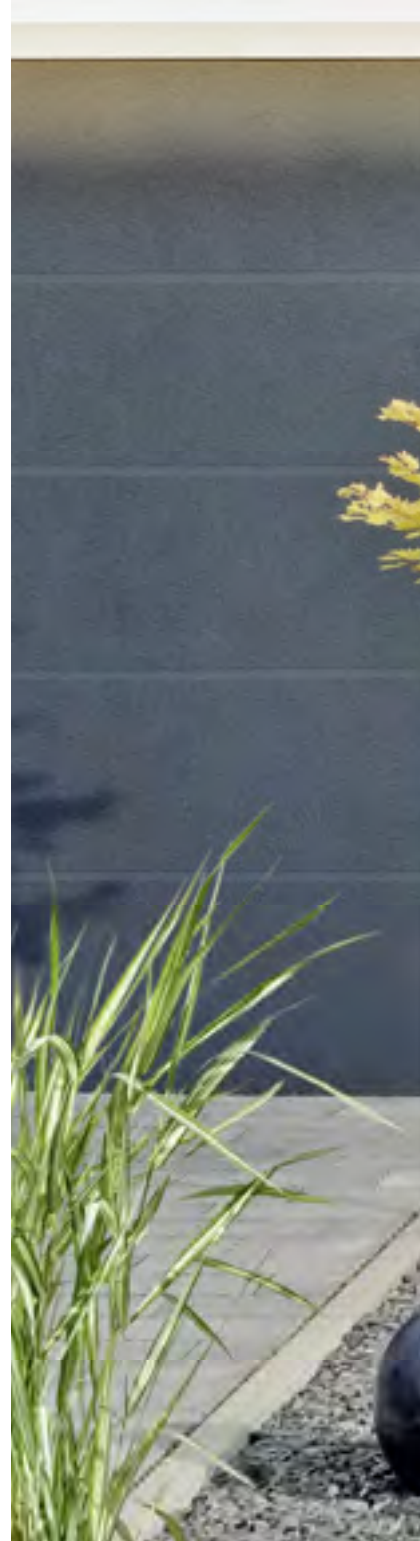
Sand blasted Liseo W3i variant 2

On clear basic glass

Glazing matt finish with 3 clear lines

Part no. GS 314

# Liseo W4i



**Liseo W4i** | No glass insert

Colour Light grey

●● Part no. N20 B

●○ Part no. N20 A

Supplied with design related door knob HA 445

Matt brushed stainless steel

With glazed side panel

**Liseo W4i** | Model pane

Sand blasted Liseo W4i variant 2

On clear basic glass

Glazing matt finish with 4 clear lines

Part no. GS 316



**Liseo W4i** | No glass insert

Colour Finea 04

●● Part no. N20 B

●○ Part no. N20 A

Supplied with design related door knob HA 445

Matt brushed stainless steel

With glazed side panel

**Liseo W4i** | Model pane

Sand blasted Liseo W4i variant 2

On clear basic glass

Glazing matt finish with 4 clear lines

Part no. GS 316



# CLASSICA - design "Villa"



**Amsterdam** design "Villa" | Glazed at the top

DESIGN: Sabine Bischof

**Bruxelles** design "Villa" | No glass insert

DESIGN: Sabine Bischof



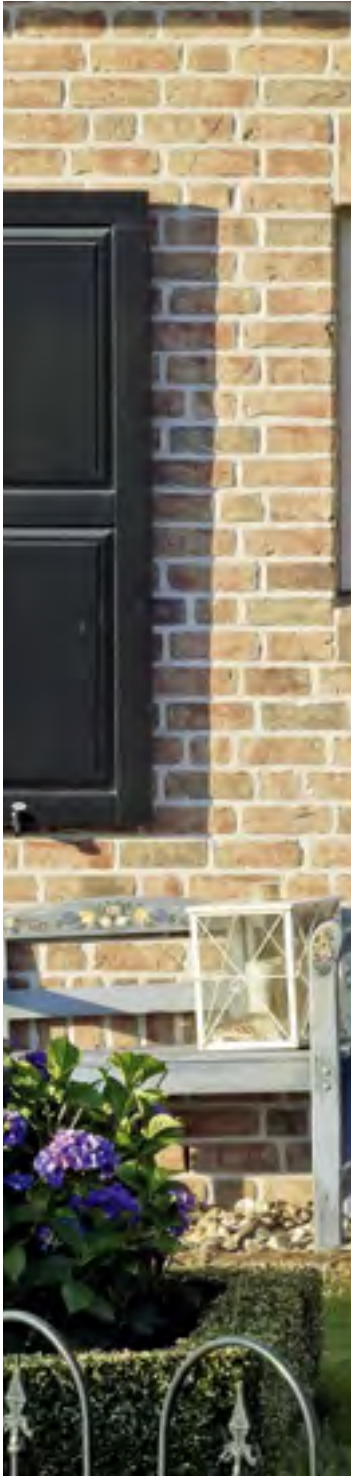
**Paris** design "Villa" | 3 glazed inserts

DESIGN: Sabine Bischof

**London** design "Villa" | 2 glazed inserts

DESIGN: Sabine Bischof

Amsterdam

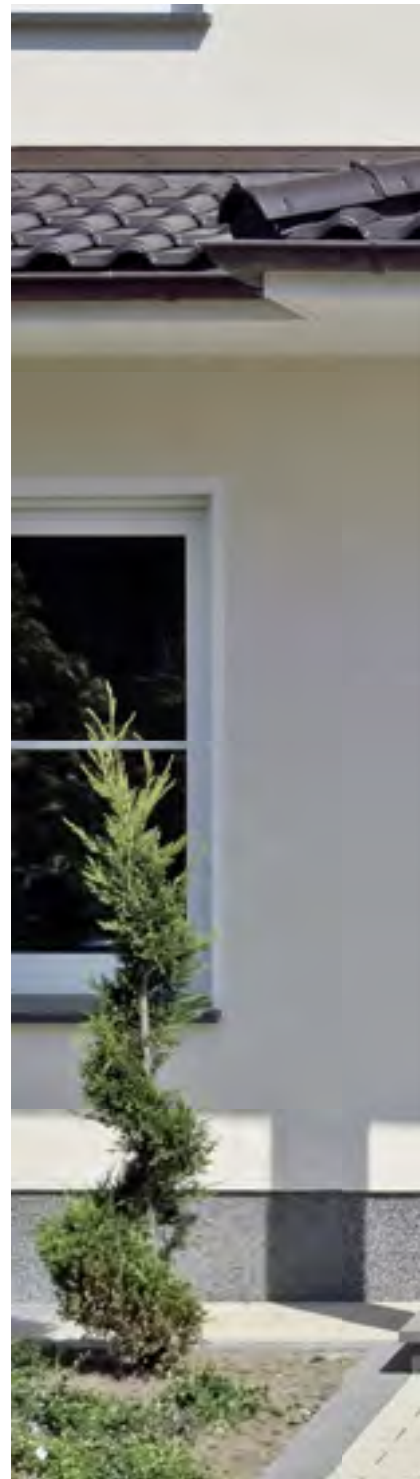






**Amsterdam** design "Villa" | Glazed at the top  
Colour Anthracite grey  
Clear glass, flat  
●● Part no. N81 B  
●○ Part no. N81 A  
Supplied with design related door knob HA 445  
Matt brushed stainless steel

Bruxelles





**Bruxelles** design "Villa" | No glass insert

●● Part no. U31 B

●○ Part no. U31 A

Supplied with design related door knob HA 445

Matt brushed stainless steel

With 2 glazed side panels

Clear glass, flat

# Bruxelles



**Bruxelles** design "Villa" | No glass insert

Colour Brown red

● Part no. U31 B

○ Part no. U31 A

Supplied with design related door knob HA 445

Matt brushed stainless steel



AMBIENCE\*

**Bruxelles** design "Villa" | No glass insert  
Shown as double-sided attachment panel

With 2 glazed side panels  
Clear glass, flat

# Paris



**Paris** design "Villa" | 3 glazed inserts

Colour Fir green

Clear glass, flat

● Part no. N77 B

○ Part no. N77 A

Supplied with design related door knob HA 445

Matt brushed stainless steel

**Paris** design "Villa" | 3 glazed inserts

Clear glass, flat

● Part no. N77 B

○ Part no. N77 A

Supplied with design related door knob HA 445

Matt brushed stainless steel



**Paris design "Villa" | 3 glazed inserts**

Clear glass, flat

●● Part no. N77 B

●○ Part no. N77 A

Supplied with design related door knob HA 445

Matt brushed stainless steel

# London



**London** design "Villa" | 2 glazed inserts

Clear glass, flat

● Part no. U46 B

○ Part no. U46 A

Supplied with design related door knob HA 445

Matt brushed stainless steel





**London** design "Villa" | 2 glazed inserts

Colour Anthracite grey

Clear glass, flat

●● Part no. U46 B

○ Part no. U46 A

Supplied with design related door knob HA 445

Matt brushed stainless steel

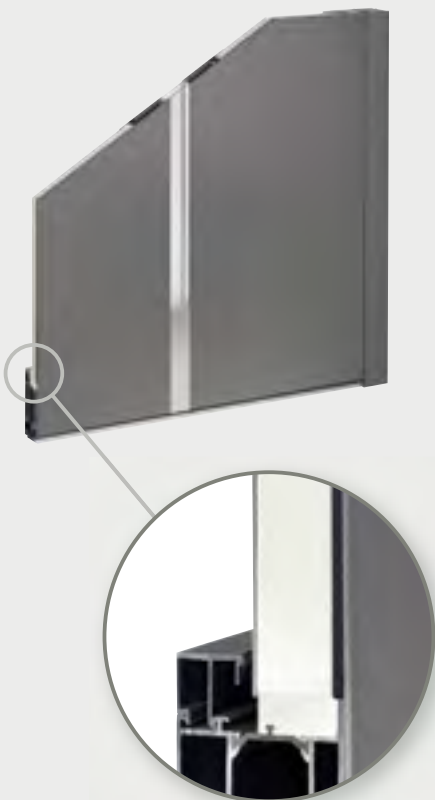
# THE ATTACHMENT PANEL

●● The single-sided attachment panel (A) – First-class design and high functionality



exterior view

interior view\*



#### Design / Functionality

Elegance on the outside due to the flush surfaces and the concealed door leaf sections, functionality on the inside with glass frames.

#### Care / Maintenance

As the frame is concealed on the outside and due to the selected high-grade surface materials, care and maintenance is very easy.

#### Insulation

- Highly insulating rigid foam core in combination with a 4 mm layer of cellulose
- Double insulation glazing, exterior and interior pane: single-pane safety glass with 2 low emissivity coatings and Argon gas fill if technically feasible

#### Security

- 3 mm aluminium sheeting on the outside
- 1.5 mm aluminium sheeting on the inside

●● The double-sided attachment panel (B)



exterior view

#### Design / Functionality

Elegance and perfection on the outside as well as on the inside due to the flush surfaces and the concealed door leaf sections.

#### Care / Maintenance

As the frame is concealed between the two panels and due to the selected high-grade surface materials, care and maintenance is very easy.

#### Insulation

- Highly insulating rigid foam core in combination with a 4 mm layer of cellulose, thus achieving an insulation thickness of at least 65 mm
- Triple insulation glazing, exterior and interior pane: single-pane safety glass with 2 low emissivity coatings and Argon gas fill if technically feasible

#### Security

- 3 mm aluminium sheeting on the outside
- 2 mm aluminium sheeting on the inside
- Triple insulation glazing, exterior and interior panes: 4 mm single-pane safety glass

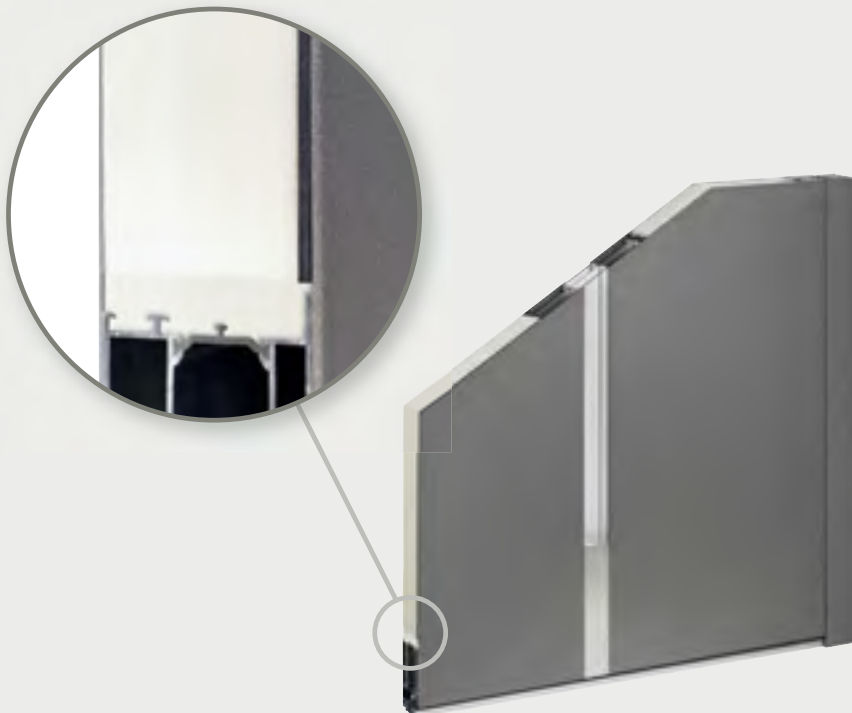
# THE HARMONY OF DOOR HANDLES

Uncompromised design combined with premium quality



interior view\*  
standard version

interior view\*  
identical views on the outside/inside,  
non-standard version,  
available as an extra option

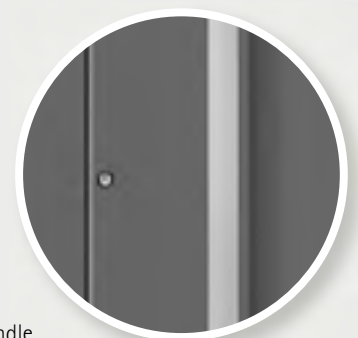


Less is definitely more, and often better, too. The shape and material of a door handle should harmonise with the style of the front door. This should always be taken into consideration before starting to develop a front door design. The design of the handles for the Decenta range has been created to complement the style of the panels and, by using the right materials, to enhance the contemporary feel they create.



## EASIER OPERATION

Another advantage derives from the fact that the handles are mounted directly on the door panel: The ease of operation is improved because there is more space between door lock and door handle, making it easier to open or lock the front door. When creating our door handles, our designers attached great importance to these ergonomic aspects.

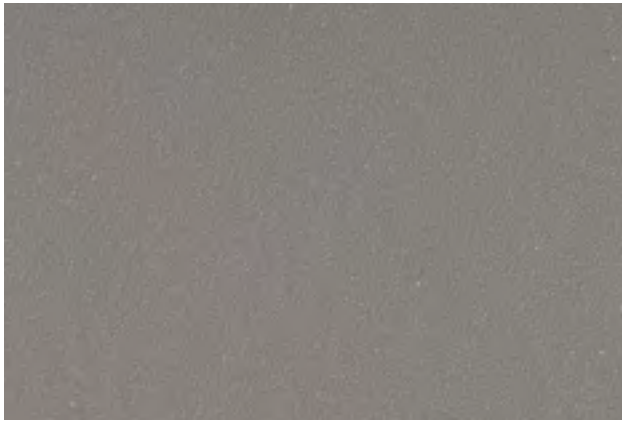


The design  
related handle

# FINEA

# DIVERSE SHADES AND EXTREMELY ROBUST SURFACES

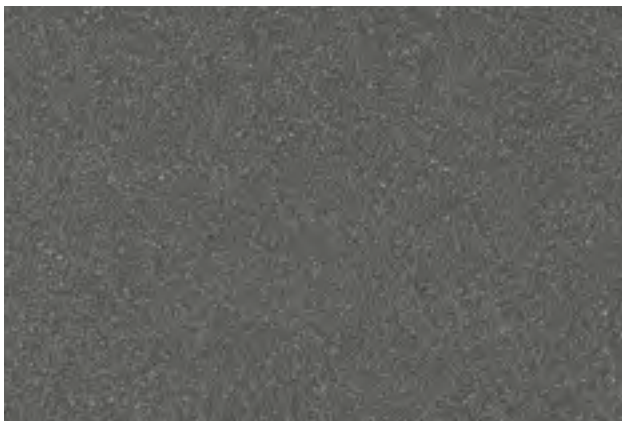
The fine, smooth and harmonious structure of the surface is effected by a particularly high concentration of coloured pigments combined with a fine grain size of raw material. Embedded metal particles contribute to the precious glimmer and elegant appearance. The FINEA coatings are not only easy to clean but also extremely sturdy and robust due to their special material composition. As a result of their unbeatable surface strength, the FINEA colours fulfil strict requirements on scratch resistance and resistance to impact.



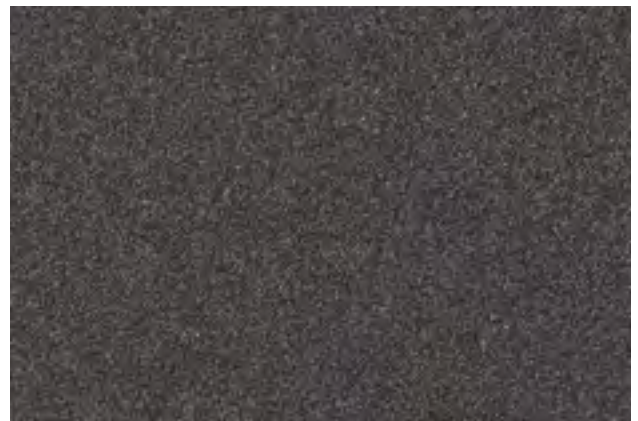
FINEA 03



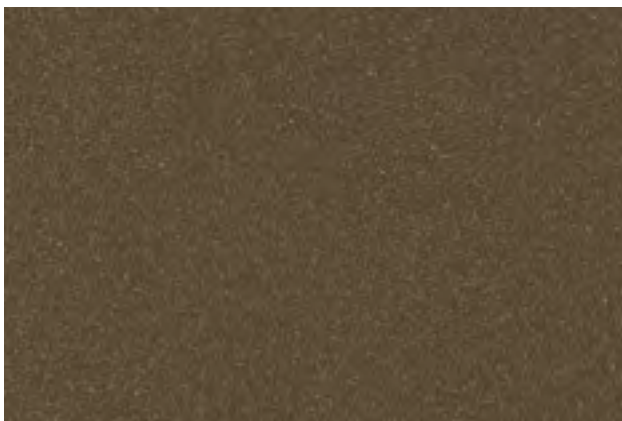
FINEA 04



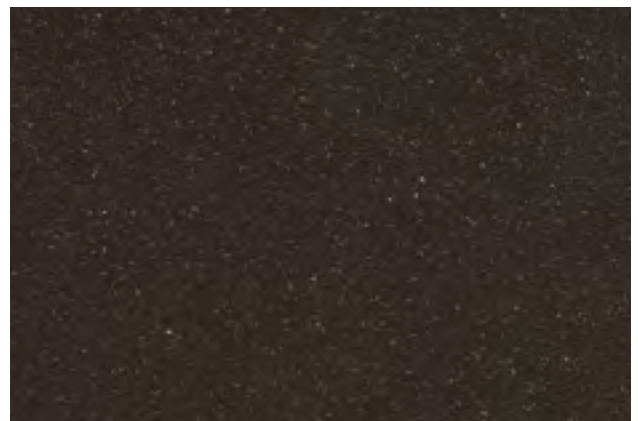
FINEA 13



FINEA 105



FINEA 14



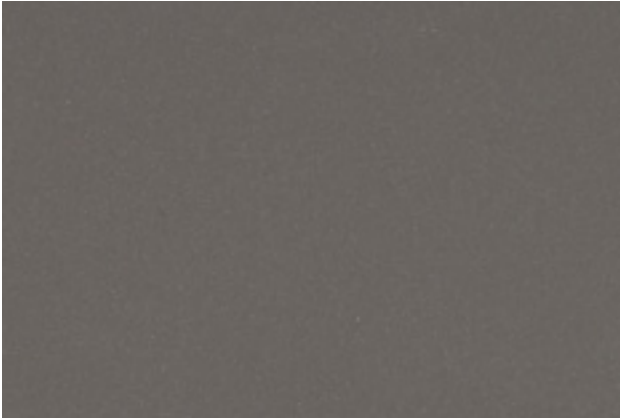
FINEA 15

# SILVEA



# STRIKING EFFECTS THANKS TO METALLIC MICROPARTICLES

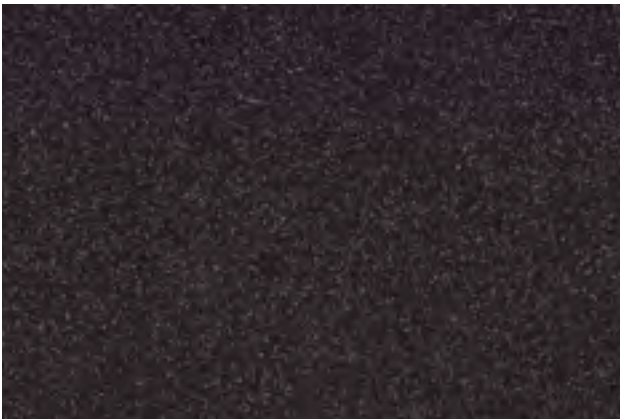
Apart from the colour pigments, metallic microparticles are spread evenly all over the surface. The grain size of the raw material has the effect that the surface finish looks flush, matt and yet bright and vital. Light is reflected by thousands of tiny shimmering dots. The SILVEA coated surface is durable and easy to clean.



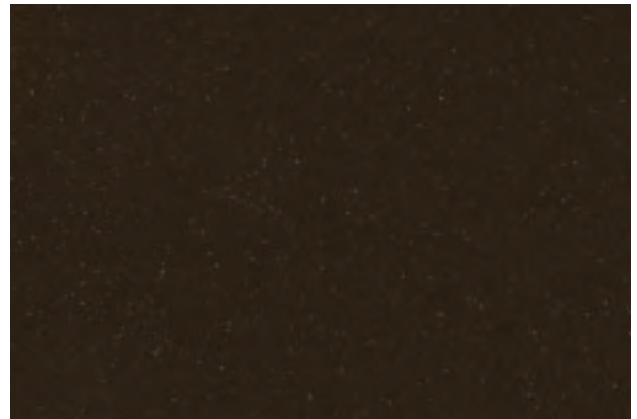
SILVEA 03



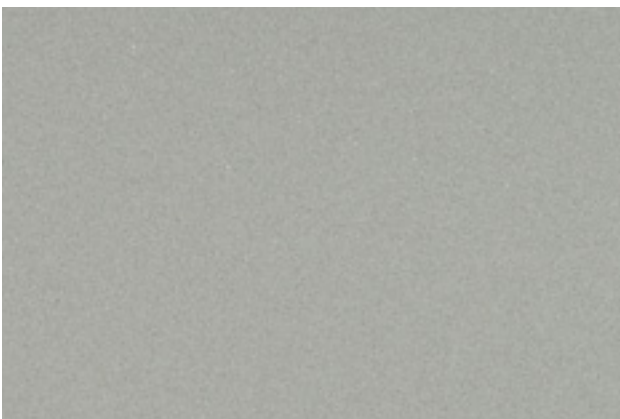
SILVEA 04



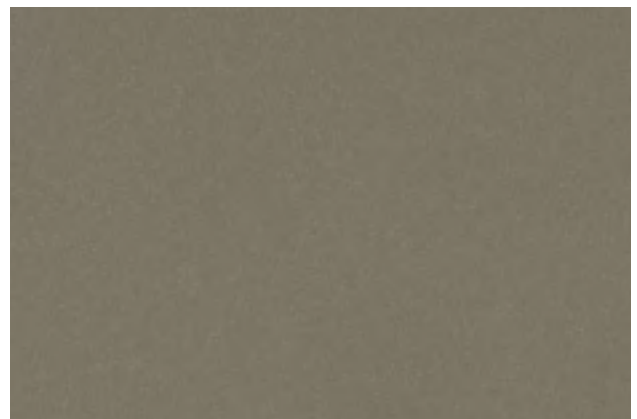
SILVEA 06



SILVEA 07



SILVEA 10



SILVEA 11